

# BHA

Proven Solutions, Proven Performance

## CORPORATE PROFILE



**Bert L. Howe & Associates, Inc.**

**Construction Consultants**

*Construction and Design Professionals*

[www.berthowe.com](http://www.berthowe.com)



# Corporate Profile

**F**ounded in 1993, Bert L. Howe & Associates, Inc., is a full service construction claims and litigation support firm focused on construction defect claims, construction expert witness testimony, general construction investigation and dispute resolution. As a multi-disciplinary construction consulting firm, BHA is dedicated to providing industry-leading service to legal and insurance professionals engaged in the full spectrum of construction-related claims.

The Experts Group at Bert L. Howe & Associates, Inc., draws from the experience gained through more than 5,000 expert designations in a wide variety of construction defect and claims matters. Leveraging from this considerable body of experience, BHA provides construction related trial support and expert consulting services to the nation's most recognized litigation practitioners, Fortune 500 builders, commercial general liability carriers, owners, construction practice groups, and a variety of state and local government agencies.



# CREDIBILITY

Over 20 Years of Experience

Thousands of Expert Designations

Real Time Client Accessibility, Consultation, and Support

Highly Skilled Team

Instant Client Sharing Portal

Innovative BHA Digital Inspection Software

Meaningful Cost & Productivity Improvements

The Experts Group at BHA is comprised of credentialed construction professionals, and includes recognized experts in the fields of repair cost estimating, forensic architecture, civil and structural engineering, general contracting, construction management and scheduling, roofing, waterproofing, building envelope systems, and construction methods and materials. These experts have provided our clients with the highest level of service and expertise in the full range of construction-related claims, including:

- ▣ *Single-family production housing*
- ▣ *Multi-family residential*
- ▣ *Apartments and hotels*
- ▣ *Institutions*  
*(schools, hospitals, government facilities)*
- ▣ *Commercial and industrial facilities*
- ▣ *State and local municipalities*
- ▣ *Infrastructure and public right-of-way*
- ▣ *Delay claims analysis*
- ▣ *Construction safety/premises liability*
- ▣ *Coverage and exposure analysis*



**Bert L. Howe & Associates, Inc.**

**Construction Consultants**

*Construction and Design Professionals*



# BHA Capabilities





## GENERAL CONTRACTING

The Experts Group at Bert L. Howe & Associates, Inc., delivers effective solutions to the myriad claims arising from all types of construction-related litigation. Licensed general and engineering contractors work in integrated organizational alliance with the firm's design experts to provide our clients with vital information and concise explanation of complex defect claims. BHA provides general construction investigation, expert witness testimony, and claims-related support services to national builders, sub trades, building product manufacturers, and construction claims professionals nationwide.

## EXPERT TESTIMONY

Bert L. Howe & Associates, Inc., is a full service construction claims and litigation support firm with focus on construction defect claims, construction expert witness testimony, general construction investigation, and dispute resolution. The Experts Group at BHA is comprised of credentialed construction professionals, and includes recognized experts in the fields of repair cost estimating, forensic architecture, civil/structural engineering, roofing, waterproofing, and building envelope systems. BHA provides nationwide construction-related expert support services to the nation's most recognized construction litigation practitioners, Fortune 500 builders, commercial general liability carriers, owners, construction practice groups, and a variety of state and local government agencies.



## DELAY CLAIMS

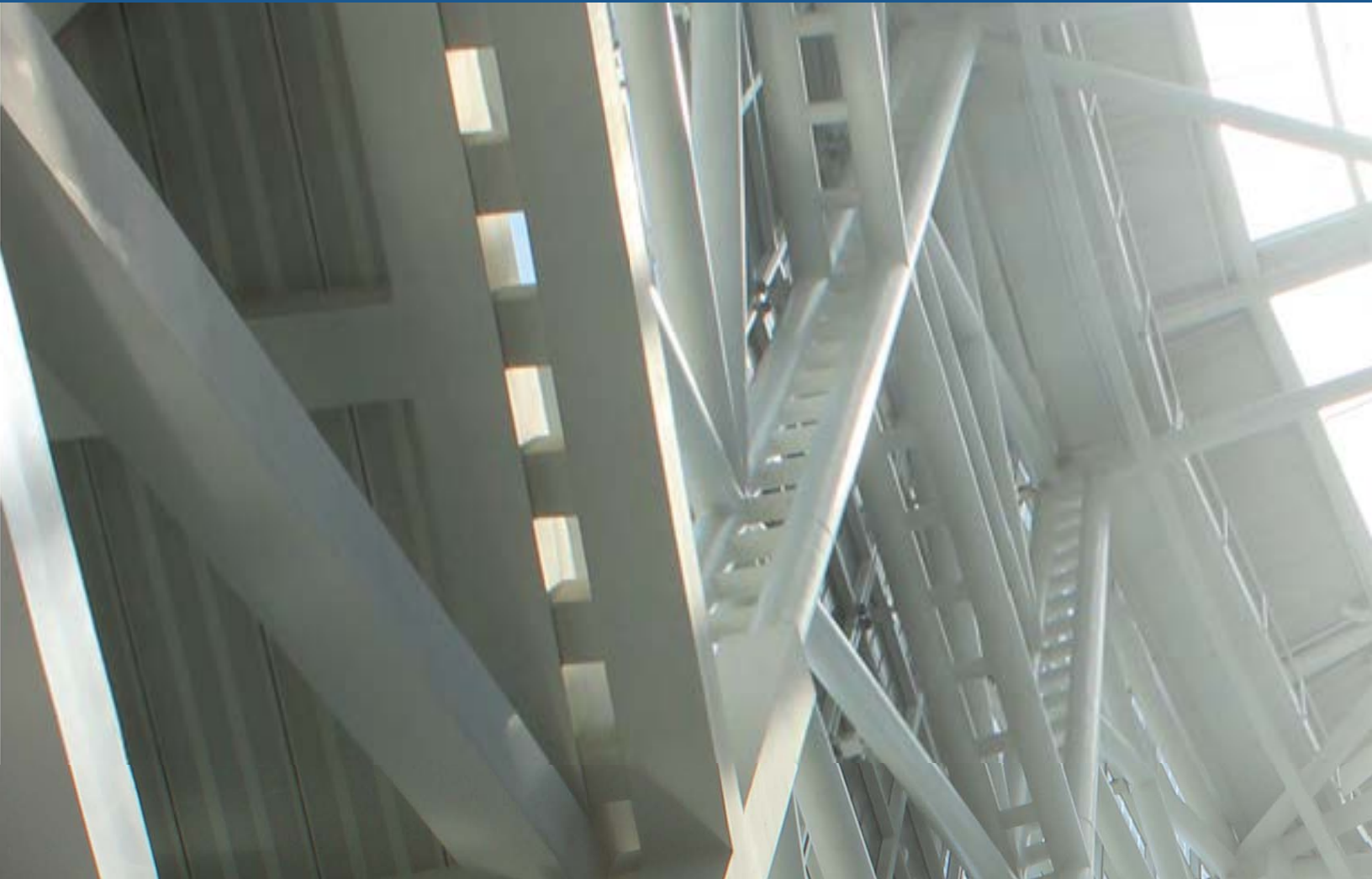
The Construction Experts Group at BHA delivers comprehensive delay claim analysis to an industry increasingly focused on project schedule performance. Delay claims have consistently been key provisions of construction contracts. Schedule performance is critical to cost effective project completion; subsequently, claims have become more frequent when delays are experienced. Delay claims are, by nature, complex and document-intensive, with contracts commonly including detailed provisions addressing the components of delay and liquidated damages. BHA is uniquely staffed and qualified to provide analysis and expert testimony on all delay related issues, including critical path scheduling, no damages for delay clauses, acceleration, compensable vs. non-compensable delays, change order and RFI impacts, design issues and impacts, disruption, resultant construction defects, contractor/owner standard of care, weather, labor disputes, material shortages, Force Majeure, and termination.

## FORENSIC ARCHITECTURE

The Architects Group at Bert L. Howe & Associates, Inc. draws from the experience gained through more than 5,000 expert designations in a wide variety of construction defect and claims litigations. Leveraging from this considerable body of experience, BHA provides architectural standard of care analysis and testimony to the nation's most recognized construction litigation practitioners, Fortune 500 builders, commercial general liability carriers, owners, construction practice groups, and a variety of state and local government agencies.



# BHA Capabilities





## ROOFING & WATERPROOFING

The roofing and waterproofing experts at BHA are among the most highly regarded roofing expert witnesses in the construction forensics community. State-licensed professionals working in conjunction with the firm's architectural, general contracting, and engineering resources afford clients a comprehensive claims support solution geared toward the rapid resolution of roofing and waterproofing claims. The roofing consultants are currently designated experts in a number of residential, commercial, and government litigation projects throughout the country.

## BUILDING ENVELOPE

Bert L. Howe & Associates, Inc., is the country's largest and most experienced construction expert, claims, and support company. Throughout more than 5,000 expert designations, the architects, engineers, and specialty contractors at BHA have provided trial support services and consultation on every conceivable type of building envelope-related issue. The firm is currently designated in a wide number of cases wherein building envelope issues play a significant role in the respective litigations.

## COST ESTIMATING

The Construction Experts Group at BHA utilizes proven methodologies of analysis, quantifying, costing, and opining on matters of cost, means, methods and standards of practice related to the entire range of construction defect claims. At BHA, the cost estimating process is typically applied where disagreements exist in the scope of work and realized costs of a project. It is also employed in cases where a fair value for a scope of repairs must be determined, calculated and defended. Cost estimating requires significant experience and skilled analysis to interpret information contained in construction drawings and other common written instruments containing technical data, such as specifications and testing reports. BHA's professional experience across all construction disciplines provides our clients with the technical expertise necessary to efficiently navigate the assorted challenges influencing the increasingly complicated environment of personnel, materials, and equipment of today's projects.

## CIVIL ENGINEERING

The Engineering Group at BHA specializes in furnishing comprehensive forensic civil engineering and structural engineering services necessary for supporting legal actions. Utilizing industry-recognized standards and accepted technological methods, BHA provides clients a credible cost-effective resource geared toward explaining, identifying, and designing corrective measures. BHA is engaged in a multitude of civil engineering-related litigations involving evaluation of regulatory requirements, surveys, licensing, training, building code violations, standard of care issues, and defective specifications, and is a recognized presence in the construction claims community.

# Project Experience Production Housing

The Construction Experts Group at BHA is engaged in a wide spectrum of production housing-related construction claims. The firm has been retained to provide expert investigation, consulting, and testimony by a diverse clientele consisting of both public and privately held developers, recognized subcontractors, real estate investment trusts, and design professionals.

The architects, engineers, general and specialty contractors at BHA deliver a comprehensive multi-disciplinary expert support solution to clients concerned with all forms of production housing-related disputes. BHA experts bring a wealth of hands-on experience to bear on our residential designations, with many staff members having worked in the residential construction trades as project managers, superintendents, or in executive roles with major developers.

BHA, through designation on a multitude of production housing cases, brings an unequalled understanding of the interrelationships between developers, general contractors, and subcontractors. This, along with a comprehensive knowledge of contractual scopes of work and local standards of care and practice, positions BHA as the clear leader in analyzing subcontracts, preparing contractual scope analyses, and producing scope-based allocations of exposure. The Construction Experts Group at BHA is engaged by a number of recognized public builders throughout the country.



**Bert L. Howe & Associates, Inc.**

**Construction Consultants**

*Construction and Design Professionals*





**BHA Project ID:**  
Blitz v Warmington



**BHA Project ID:**  
Private Residence  
**Location:**  
San Diego, CA



**BHA Project ID:**  
Meadow Park  
**Location:**  
Novato, CA



**BHA Project ID:**  
Wright v Signature  
Homes Brothers  
**Location:**  
Las Vegas, NV



**BHA Project ID:**  
Private Residence  
**Location:**  
San Diego, CA

# Project Experience

## Condominiums/Multi-Family

**B**HA has gained unparalleled experience supporting multi-family residential claims. The firm has been retained in various capacities to provide expert investigation, consulting, and testimony on a mixture of townhome, condominium, apartment, and mixed-use projects. The construction and design professionals at BHA deliver a comprehensive multi-disciplinary expert support solution to clients engaged in multi-family-related construction disputes.

In today's climate of cost-sensitivity and hard line interpretation of coverage positions, BHA's extensive experience in addressing code and standard of care issues (that may fall outside of conventional coverage language) is brought to bear when addressing allegations relating to such areas as fire safety and sound attenuation. Further, our comprehensive understanding of contractual scopes of work and the ability to differentiate between common area and homeowner-maintained building components promotes efficient and effective responses relative to these often hotly contested elements of the structure.

The latest technology is employed in support of multi-family residential claims. Proven cost development methods, as well as computer-supported quantification software, assist our team in developing reliable, accurate repair cost estimates and credible apportionment of liability. This convergence of experience and technology translates into the best possible outcome for our clients and allows us to provide the highest quality litigation support services while minimizing expert support costs.



**Bert L. Howe & Associates, Inc.**

**Construction Consultants**

*Construction and Design Professionals*





**BHA Project ID:**  
Vista Pacifica  
**Location:**  
San Clemente, CA



**BHA Project ID:**  
Creekside Cottages  
**Location:**  
Park City, UT



**BHA Project ID:**  
Park Place  
**Location:**  
Surprise, AZ



# Project Experience

## High-Rise/Mid-Rise

**H**igh-rise and mid-rise projects present their own unique challenges when investigating and responding to construction defect and other construction-related claims. Curtain wall assemblies, sophisticated environmental and mechanical systems, vertical ingress and egress, as well as proprietary roofing and waterproofing systems, all contribute to the complexity of competently collecting data and preparing robust responses to allegations. Below-grade parking, site amenities, and dedicated infrastructure provide additional challenges to experts engaged on these cases.

For the forensic investigator, the large number of subcontractors, specialty trades, unique materials and architectural treatments, combined with the added management and scheduling parameters demanded during original construction, all require a comprehensive and in-depth understanding of the construction processes and procedures inherent in high-rise and mid-rise development.

With experience in a multitude of mid- and high-rise developments across numerous jurisdictions, the credentialed Construction Experts Group at BHA is ideally suited to address these unique challenges: providing industry-leading professional services with the highest level of customer care.



**Bert L. Howe & Associates, Inc.**

**Construction Consultants**

*Construction and Design Professionals*





**BHA Project ID:**  
MacFarlane Partners  
**Location:** San Francisco, CA



**BHA Project ID:**  
ICON Condos  
**Location:** San Diego, CA



**BHA Project ID:**  
Queensridge HOA  
**Location:** Las Vegas, NV

# Project Experience

## Hospitals/Medical Facilities

**W**ith designations on medical facilities all over the Southwest, BHA leads the construction forensics industry in the investigation and analysis of claims relating to hospitals and medical facilities. Across the Southwest, from California to Nevada, Arizona, and through Texas, BHA has been a leader in medical facility litigation defense for over a decade. The Experts Group at BHA has investigated and successfully defended construction-related claims involving projects that run the gamut of medical and health care facilities, including medical and dental offices, neighborhood emergent care clinics, elderly and ambulatory care and rehabilitation centers, community and university hospitals, and Level I trauma centers.



**Bert L. Howe & Associates, Inc.**

**Construction Consultants**

*Construction and Design Professionals*



**BHA Project ID:**  
St. Jude Medical Center  
**Locations:**  
Fullerton, CA



**BHA Project ID:**  
Riverside County Regional Medical Center  
**Location:** Moreno Valley, CA



**BHA Project ID:**  
L.A. Jewish Home  
For The Aging  
**Location:** Reseda, CA



**BHA Project ID:**  
Medical Center of the Rockies  
**Location:**  
Loveland, CO



**BHA Project ID:**  
Cardon Children's Hospital  
**Location:** Mesa, AZ

# Project Experience

## Hotels/Hospitality

Investigating and analyzing claims relating to hotels and other hospitality facilities presents certain unique challenges. Timing of investigations and testing, access to in-service guest rooms and service areas, and the desire by property managers to keep the maximum number of revenue-generating units on line (particularly during peak periods or seasons) all stand to affect the efficacy and efficiency of the investigation.

Further, special insight and experience is required when dealing with the unique design requirements of hotels, including fire and life safety, sound attenuation, ingress and egress, and addressing multiple occupancy types within a single complex.

The Construction Experts Group at BHA brings a wealth of highly specialized knowledge to the table on every hotel retention: knowledge gained through years of hands-on participation in hotel-related investigations, both large and small, at hotels and convention centers all across the United States.



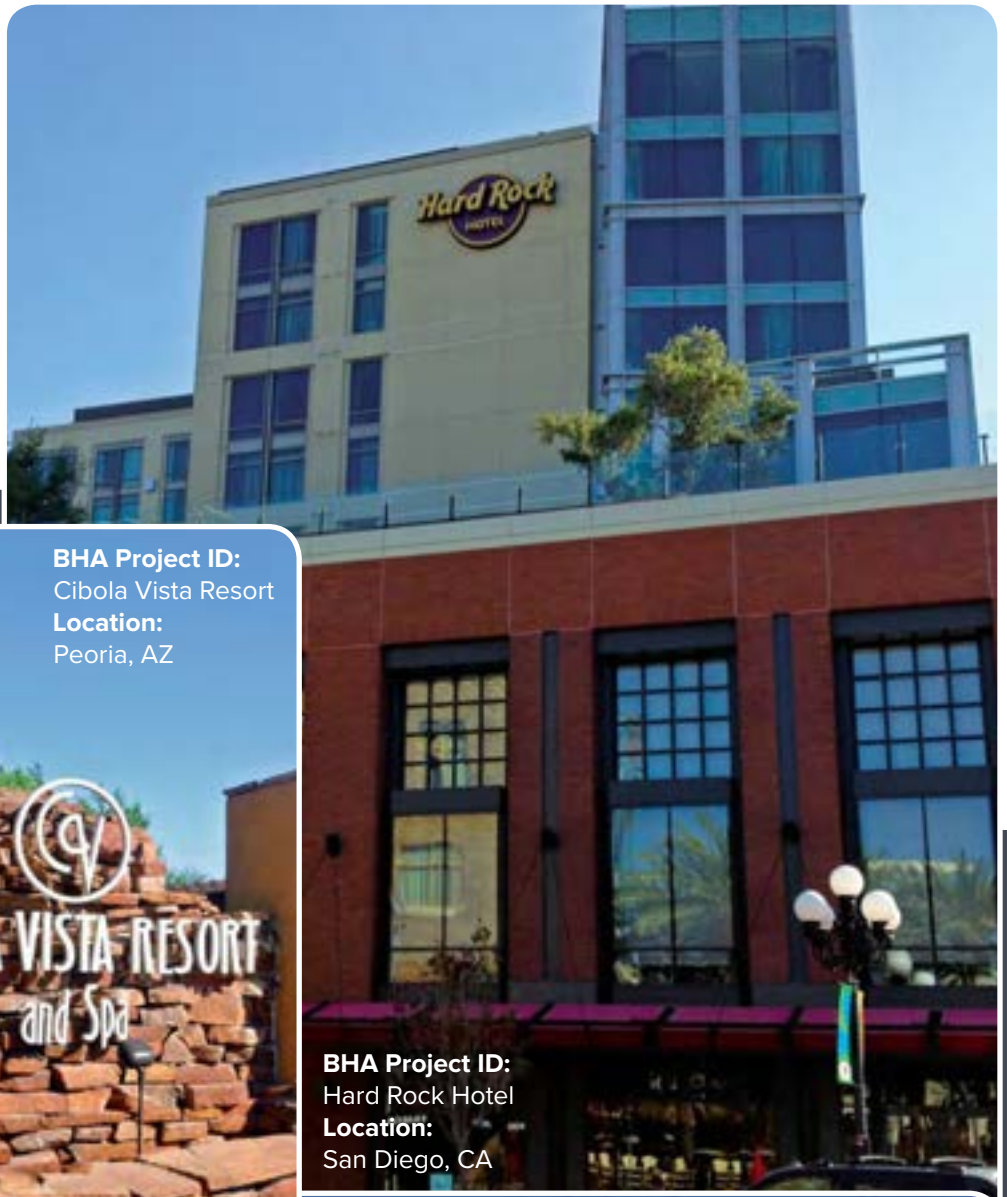
**Bert L. Howe & Associates, Inc.**

**Construction Consultants**

*Construction and Design Professionals*







**BHA Project ID:**  
Cibola Vista Resort  
**Location:**  
Peoria, AZ



**BHA Project ID:**  
Hard Rock Hotel  
**Location:**  
San Diego, CA



**BHA Project ID:**  
The Standard Hotel  
**Location:**  
Los Angeles, CA

**BHA Project ID:**  
Marina Pacifica Hotel  
**Location:**  
Venice, CA

# Project Experience

## Public Schools & Universities

Over the past 20 years, BHA experts have been designated on a wide variety of projects involving learning institutions. From elementary schools to world-renowned public and private universities, our experience is the cumulative result of the knowledge and expertise gained through analysis and response to claims arising from educational projects across the US, including California, Nevada, and Texas.

Our Construction Experts Group has analyzed and rendered opinions on a full range of issues relating to educational facilities, including site and soils-related issues, grading and drainage, roofing and waterproofing and all types of fenestration and exterior cladding issues, and is adept at navigating through the special design and approval processes often associated with the design and construction of school projects.



**Bert L. Howe & Associates, Inc.**

**Construction Consultants**

*Construction and Design Professionals*



**BHA Project ID:**  
University of California  
Riverside (UCR)  
**Location:**  
Riverside, CA

**BHA Project ID:**  
California State  
University Fullerton  
**Location:**  
Fullerton, CA



**BHA Project ID:**  
California State University Fullerton  
**Location:**  
Fullerton, CA

**BHA Project ID:**  
California State  
University Fullerton  
**Location:**  
Fullerton, CA

**BHA Project ID:**  
Santa Monica City College  
**Location:**  
Santa Monica, CA

# Project Experience

## Institutional Projects

The Experts Group at BHA is uniquely sensitive to the special care required when addressing construction-related claims involving places of worship. Churches, synagogues, and related facilities all require an appreciation for religious and cultural sensitivities, traditions, and protocols. As with other specialized construction types and occupancy groups, these facilities also have unique code requirements that demand the highest level of competence in investigation, interpretation, and analysis of alleged conditions.

BHA's depth of experience in providing service to those legal and insurance professionals engaged in claims involving places of worship is second to none. Our commitment to providing the highest level of professional service in a dignified and respectful manner, while vigorously investigating alleged issues, is unparalleled in the industry.

**BHA Project ID:**  
Christ Cathedral  
**Location:**  
Garden Grove, CA



**Bert L. Howe & Associates, Inc.**

**Construction Consultants**

*Construction and Design Professionals*

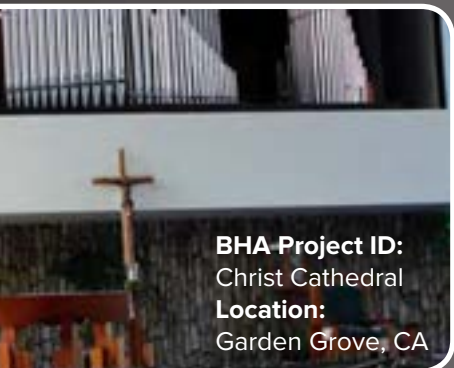




**BHA Project ID:**  
Christ Cathedral  
**Location:**  
Garden Grove, CA



**BHA Project ID:**  
University Synagogue  
**Location:**  
Irvine, CA



**BHA Project ID:**  
Christ Cathedral  
**Location:**  
Garden Grove, CA



**BHA Project ID:**  
Temple Judea  
**Location:**  
Tarzana, CA



# Project Experience

## Commercial Developments

In today's economic environment, construction-related litigation involving commercial and industrial projects is becoming more and more prevalent. Delay claim cases, particularly in the public sector, are also becoming more commonplace. With a vast amount of experience across all types of non-residential projects, the Experts Group at BHA stands ready to assist parties engaged in the development, construction, repair, or remodel of commercial and industrial spaces.

BHA's experience base covers the full range of commercial development, including heavy industrial and manufacturing, aerospace and tech (including clean rooms, server spaces and telecommunications and broadcast facilities), warehousing, retail and mixed-use facilities, and prefabricated structures.

The Experts Group at BHA brings a heightened understanding of commercial construction management and scheduling (including CPM), scheduling delay analysis, prime and subcontract agreement scope and interrelationships, and the myriad construction documents encountered on non-residential projects, including boilerplate and manuscript general conditions, project specifications and bid packets, submittals, RFIs, change orders, schedules of values, and progress payment requests.



**Bert L. Howe & Associates, Inc.**

**Construction Consultants**

*Construction and Design Professionals*





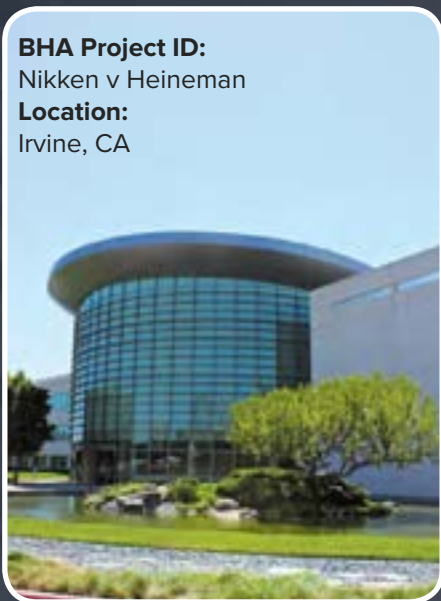
**BHA Project ID:**  
Mesa Centerpointe Plaza, LLC  
**Location:**  
Mesa, AZ



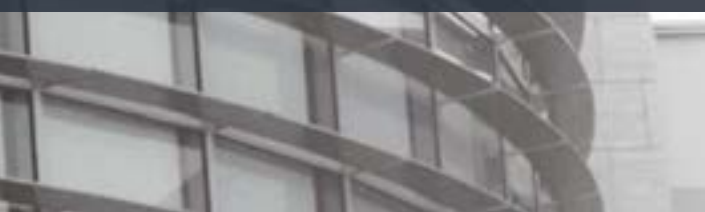
**BHA Project ID:**  
Utaz Development Corp  
**Location:**  
Gilbert, AZ



**BHA Project ID:**  
Swinerton v Howard Berkeson  
Ventures, JT Wimsatt Concrete  
**Location:**  
San Diego, CA



**BHA Project ID:**  
Nikken v Heineman  
**Location:**  
Irvine, CA



# Project Experience

## Custom Housing

**W**hile many aspects of custom home construction are closely related to their production housing counterparts, a high-end custom, or “spec,” home does present certain unique challenges.

Custom homes are designed to stand apart architecturally, and they also “stand apart” forensically. With over 20 years experience investigating and analyzing custom home claims, the Construction Experts Group at BHA brings a seasoned understanding of the subtle, yet pertinent, issues associated with custom home projects.

From the unique contract language and subcontractor scopes of work associated with special finishes and assemblies to a comprehensive appreciation of the materials and methods often incorporated into high-end architectural designs, to the nuanced approach often required when inspecting custom homes, BHA designees bring the talent and experience required to ensure that these complicated and challenging projects are addressed with professionalism and alacrity.



**Bert L. Howe & Associates, Inc.**

**Construction Consultants**

*Construction and Design Professionals*



**BHA Project ID:**  
Private Residence  
**Location:**  
Beverly Hills, CA



**BHA Project ID:**  
Private Residence  
**Location:**  
Beverly Hills, CA



**BHA Project ID:**  
Private Residence  
**Location:**  
Los Angeles, CA



**BHA Project ID:**  
Private Residence  
**Location:**  
Los Angeles, CA



**BHA Project ID:**  
Private Residence  
**Location:**  
Newport Beach, CA





# Project Experience

## Retail/Regional Malls

**B**HA has been addressing construction-related claims involving retail developments and regional malls for over two decades. The credentialed experts at BHA have investigated and prepared comprehensive responses to claims on projects ranging from strip malls to big-box retailers and mixed-use projects, on up to large regional malls. Furthermore, the Experts Group at BHA has investigated workman's compensation claims, personal injury, delay claims, as well as conventional construction defect cases on all manner of retail projects.

From site and civil issues, through building cladding and exterior finishes, including roofs and roof-mounted building systems, BHA's team of professionals defines the standard for commercial and retail project investigation and response.



Bert L. Howe & Associates, Inc.

Construction Consultants

Construction and Design Professionals





**BHA Project ID:**  
Roosevelt Lofts  
**Location:**  
Los Angeles, CA



**BHA Project ID:**  
Halcomb  
**Location:** Leadville, CO



**BHA Project ID:**  
Gilmore Farmers Market  
**Location:**  
Los Angeles, CA

# Experts Group

The Experts Group at BHA is comprised of a diverse and multi-talented group of construction professionals, bringing years of design, project management, and hands-on trade experience to bear in every designation. Each team member also brings a highly-developed understanding of the unique challenges presented by construction and building design-related claims, an understanding that can only be garnered through extensive participation in this highly specialized arena.

As a result of the collegial approach taken by BHA in assessing and addressing case and client-specific needs, coupled with the diversity of experience and expertise marshalled under the BHA umbrella, the legal or claims professional utilizing the Construction Experts Group at BHA not only benefits from the key designated consultant, but also the combined and shared knowledge of the entire team.

BHA is steadfast in our mandate that all members of the Construction Experts Group maintain all current credentials, seek out additional training on new construction techniques and materials in the industry on a continual basis, and encourages and nurtures the free flow of information amongst our associates.



**Bert L. Howe & Associates, Inc.**

**Construction Consultants**

*Construction and Design Professionals*





## Matthew J. Nardella

### Architect

*Forensic Architecture, Construction  
Claims Evaluation, Construction Consultant*



*Bachelor of Architecture,  
California State Polytechnic University, Pomona  
Registered Architect (C26996), State of California  
Registered Architect (AR95250), State of Florida, (Inactive)  
Registered Architect (22043), State of Texas  
Registered Architect (8276281-0301), State of Utah  
Registered Residential Designer (256-P), State of Nevada  
Supplemental Examination Commissioner, California State  
Board of Architectural Examiners  
President and Vice President,  
Sea Bluffs Homeowners Association*

[matt@berthowe.com](mailto:matt@berthowe.com)



## John M. Springman

### Architect

*Construction and Design Forensic Analysis,  
Construction Defect & Claims Expert*



*Master of Architecture, University of Illinois  
Bachelor of Architectural Sciences, University of Illinois, including one year of  
study at Ecole des Beaux Arts, Versailles, France  
Participated in the City Building Program, a primary education program  
NCARB Certification (60037)  
Licensed Architect, California (C11330)  
Licensed Architect, Colorado (400592)  
Licensed Architect, Nevada (5501)  
Licensed Architect, Texas (20019)  
Licensed Architect, Utah (8233605-0301)  
Licensed Architect, New Mexico (005451)  
Licensed Architect, Florida (AR96919)  
Licensed Architect, Arizona (55470)  
California Architectural Registration Board  
Supplemental Examination Commissioner*

[johns@berthowe.com](mailto:johns@berthowe.com)



## Mark Chapman

### Civil Engineer

*Construction & Design Consultant  
General Building Contractor*



*Bachelor of Science, Civil Engineering, 1991,  
California State University, Long Beach  
Registered Civil Engineer for California, No. 52142, 1994  
Registered Civil Engineer for Arizona, No. 36022  
Licensed General Contractor, No. B-632445*

[mark@berthowe.com](mailto:mark@berthowe.com)



## Donald MacGregor

### General Contractor

*General Construction Investigation  
Builders Standard of Care Expert*



*Licensed General Building Contractor (900920),  
State of California (Inactive)  
Licensed General Contractor, All Structures (182648),  
State of Oregon (Inactive)  
ICC Certificated Building Inspector (IBC), #5028454-B5  
ICC Certificated Building Inspector (UBC), #5028454-10  
Certificate – IICRC & AGGIH Mold Remediation in Buildings  
Member, International Conference of Building Officials*

[donm@berthowe.com](mailto:donm@berthowe.com)



## John D. Tolman

**General Contractor**  
*Construction Cost*  
*Standard of Care Expert*



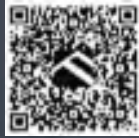
Doctor of Law – Western State University  
Bachelor of Science, Law – Western State University  
Bachelor of Arts, Business Management – University of Redlands  
Licensed General Contractor – California #410125  
Licensed General Contractor – Arizona #259463  
Licensed General Contractor – Utah #9779160-5501  
Licensed General Contractor – Florida (Pending)  
Licensed Real Estate Broker – California (Inactive)  
Certified Professional Estimator (ASPE)

[johntolman@berthowe.com](mailto:johntolman@berthowe.com)



## Jerry Miles, P.E.

**Civil Engineer**  
*Project Manager*  
*Personal Injury Expert*



Brigham Young University, Provo, UT; BS Civil Engineering (1984)  
Professional Engineer's License (Civil #88865) in Texas  
Professional Engineer's License (Civil #42593) in California  
Professional Engineer's License (Civil #11556) in Nevada  
Professional Engineer's License (Civil #83588) in Florida  
Professional Engineer's License (Civil #170954-2202) in Utah  
Professional Engineer's License (Civil - Inactive) in Louisiana  
Professional Engineer's License (Civil - Inactive) in Oklahoma  
Professional Engineer's License (Civil - Inactive) in Arkansas

[jerrymiles@berthowe.com](mailto:jerrymiles@berthowe.com)



## Robert Brockway

**Senior Construction**  
**Project Manager**  
*Construction Estimator, Scheduler*  
*Construction Risk Manager*



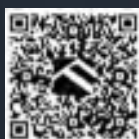
Civil Engineering Technologies at Temple University,  
Philadelphia, Pennsylvania  
Six Years of Course Work in Civil Engineering and  
Construction Management  
Certified Mast of CSI Divisions One Through Fourteen,  
Construction Specifications Institute  
OSHA Construction Safety and Health Training

[robertbrockway@berthowe.com](mailto:robertbrockway@berthowe.com)



## Matt Stiefel, P.E.

**Civil Engineer**  
*Forensic Engineering Expert*  
*Standard of Care Expert for*  
*Professional Engineers*



University of California, Los Angeles; BS Civil Engineering (1997)  
Professional Engineer's License (Civil #61676) in California  
Professional Engineer's License (Geotechnical #3069) in California  
Professional Engineer's License (Civil #16611) in Nevada  
Professional Engineer's License (Civil #124025) In Texas  
Professional Engineer's License (Civil #8301952-2202) In Utah  
International Code Council California Building Plans Examiner  
Cal EMA Post-Disaster Safety Assessment Program Evaluator  
Foundation Engineering Course (CE 744); NC State University – 2007  
Structural Design in Wood Course (CE 528); NC State University – 2007  
Wood Structures I and II; International Code Council - 2004  
Structural Design Seminar; University of Wisconsin, Madison - 2006

[mattstiefel@berthowe.com](mailto:mattstiefel@berthowe.com)





**Alan D. Sturm**  
**General Contractor**  
*Cost Estimating Expert,  
 Fire, Flood, & Catastrophic  
 Loss Specialist*



*Licensed General Contractor B (594520), State of California (Inactive)  
 Oregon: Adjuster General Lines (Inactive)  
 Michigan: Non Resident Insurance Adjuster,  
 Qualifications: Fire & Other Hazards (Inactive)  
 Texas: Adjuster—Property & Casualty (Inactive)  
 Florida: Independent Adjuster, Property & Casualty (Inactive)  
 Oklahoma: Independent Adjuster, Property, Fire, Marine (Inactive)  
 FAA Part 107 Remote Pilot Certificate*

[alansturm@berthowe.com](mailto:alansturm@berthowe.com)



**David L. Suggs**  
**General Contractor**  
*Construction Claims Specialist  
 Certified Professional Estimator (ASPE)*



*Licensed General Contractor (778968), State of California  
 Licensed General Contractor (072729), State of Nevada  
 Certified Professional Estimator (ASPE)  
 American Society of Professional Estimators  
 EPA - Certified Lead Renovator  
 Certified Waterproofing Applicator  
 Member American Society of Professional Estimators*

[davidsuggs@berthowe.com](mailto:davidsuggs@berthowe.com)



**Jeannette Y. Arakaki Hotta**  
**Architect / Forensic Research Specialist**  
*Forensic Architectural Expert*

*California Architectural License (28468)  
 National Council of Architectural Registration  
 Boards Certification  
 Bachelor of Science in Architecture  
 California State Polytechnic University, Pomona  
 Ecole Speciale d'Architecture, Paris, France  
 Athens Polytechnic, Athens, Greece*

[jeannettehotta@berthowe.com](mailto:jeannettehotta@berthowe.com)



**Charles M. Miller**  
**General Contractor**  
**Mechanical Engineer**  
*ICC Certificated Building Inspector  
 ICC Certificated General Contractor  
 AAPM Certificated Project Manager*



*University of Iowa, Iowa City, Iowa  
 Licensed General Contractor, Colorado (multiple jurisdictions)  
 Licensed General Contractor, Iowa  
 Licensed General Contractor, Montana  
 Licensed General Contractor, Nebraska  
 Licensed General Contractor, Illinois  
 Licensed General Contractor, Texas (inactive)  
 Licensed General Contractor, Missouri  
 International Code Council Member  
 Department of Energy, published technical author  
 Home Builders Association of Metro Denver*

[charlesmiller@berthowe.com](mailto:charlesmiller@berthowe.com)



## **Bradley W. Hughes**

**General Contractor**  
*Standard of Care Expert*  
*Roofing & Waterproofing*  
*Claims Specialist*



*Licensed General Contractor (723912), State of California*  
*C-39 Roofing & Waterproofing Contractor (723912),*  
*State of California*  
*Graduate, Control Data Institute, Anaheim, CA*  
*Associate of Science Equivalence Diploma*  
*Computer Technology*  
*Tile Roofing Institute Certification*  
*Continuing Education Seminar/Credits: Fiber-Reinforced*  
*Polymer Composites*  
*Registered Home Improvement Contractor*  
*California CSLB Industry Expert*  
*Member National Roofing Contractors Association*

[bradh@berthowe.com](mailto:bradh@berthowe.com)



## **Terry D. Ingo**

**General Contractor**  
*General Building Contractor*  
*Standard of Care Expert*



*Licensed General Contractor Class KB-2 (314086), State of Arizona*  
*Bachelor of Construction Management -*  
*Brigham Young University*  
*Certified Estimating Systems Trainer / Consultant*

[TerryIngo@berthowe.com](mailto:TerryIngo@berthowe.com)



## **John T. Matthies**

**Associate Consultant**  
*Architectural Standard of Care Expert*  
*Construction Consultant*



*Registered Architect, Illinois (inactive)*

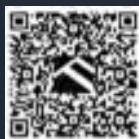
[JohnMatthies@berthowe.com](mailto:JohnMatthies@berthowe.com)



## **Jorge Porter**

**Architect**

*Destructive Testing Investigation*  
*Visual Inspections, Construction*  
*Consultant*



*Bachelor's Degree in Architecture, Escuela*  
*Mexicana de Arquitectura, La Salle University, Mexico City, Mexico*  
*Licensed Architect, Mexico (Inactive)*  
*Licensed Architect (C18753), State of California*

[jorgeporter@berthowe.com](mailto:jorgeporter@berthowe.com)





**Bert L. Howe & Associates, Inc.**

**Construction Consultants**

*Construction and Design Professionals*



**Corporate Offices  
Southern California**  
5415 E. La Palma Ave.  
Anaheim Hills, CA 92807  
714-701-9180



**Las Vegas**  
3960 Howard Hughes Parkway  
Suite 500  
Las Vegas, Nevada 89169  
800.928.1822



**Phoenix**  
2375 East Camelback Road  
Suite 600  
Phoenix, Arizona 85016  
800.305.6440



**Salt Lake City**  
2150 South 1300 East  
Suite 500  
Salt Lake City, Utah 84106  
800.482.1822



**Sacramento**  
180 Promenade Circle  
Suite 300  
Sacramento, California 95834  
916.569.8400



**San Antonio**  
17806 IH 10  
Suite 300  
San Antonio, Texas, 78257  
210.540.9017



**San Diego**  
402 W. Broadway  
Suite 400  
San Diego, California 92101  
619.890.7782



**Denver**  
4600 South Syracuse  
9th Floor  
Denver, Colorado 80237-2719  
800.248.4096

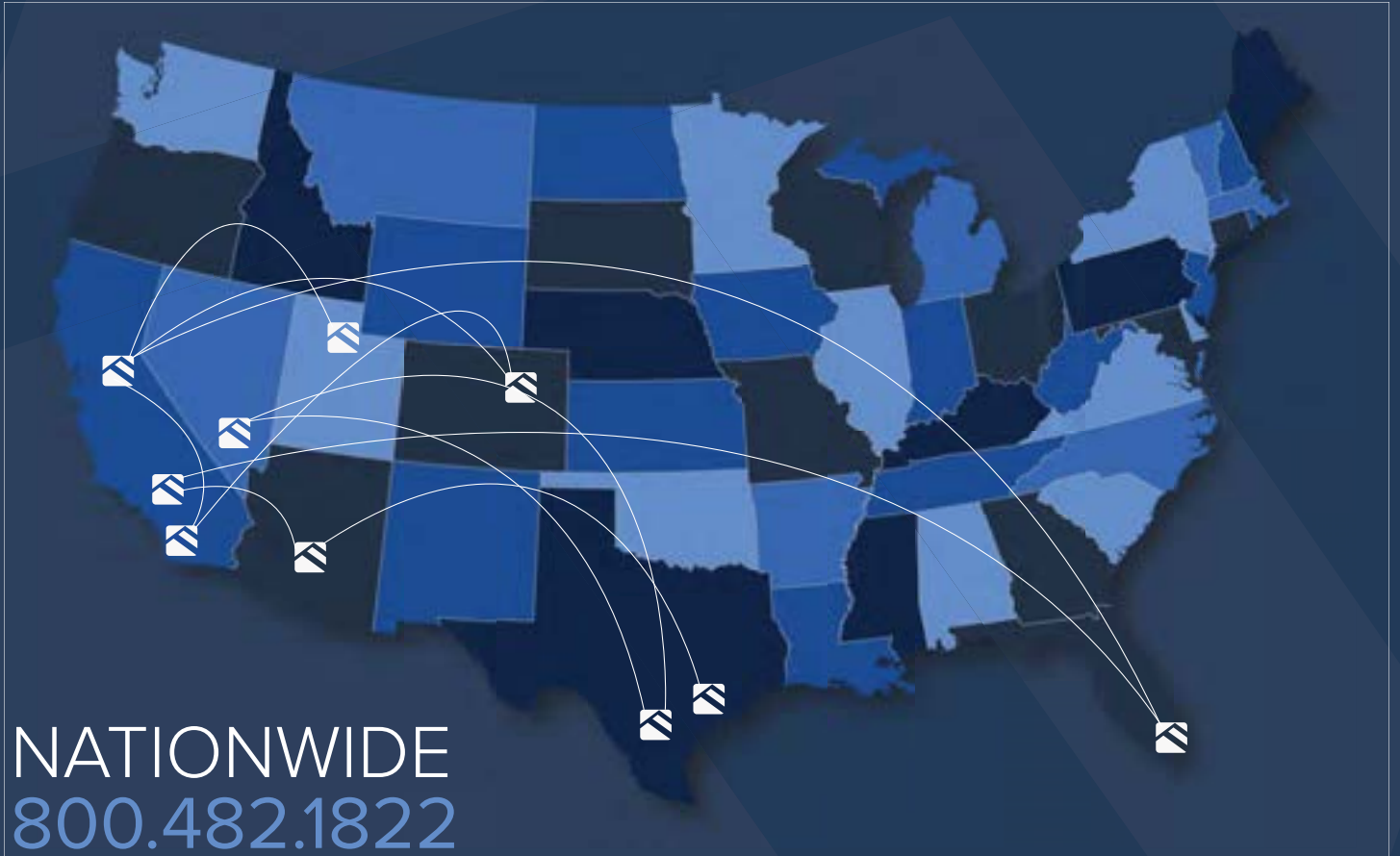


**Houston**  
800 Town and  
Country Boulevard  
Suite 300  
Houston, Texas 77024  
713.264.8221



**Miami**  
1688 Meridian Avenue  
Suite 600 & 700  
Miami Beach, Florida 33139  
800.783.1822





ANAHEIM HILLS, CA   LAS VEGAS, NV   PHOENIX, AZ   SALT LAKE CITY, UT   MIAMI, FL  
SACRAMENTO, CA   SAN ANTONIO, TX   SAN DIEGO, CA   DENVER, CO   HOUSTON, TX